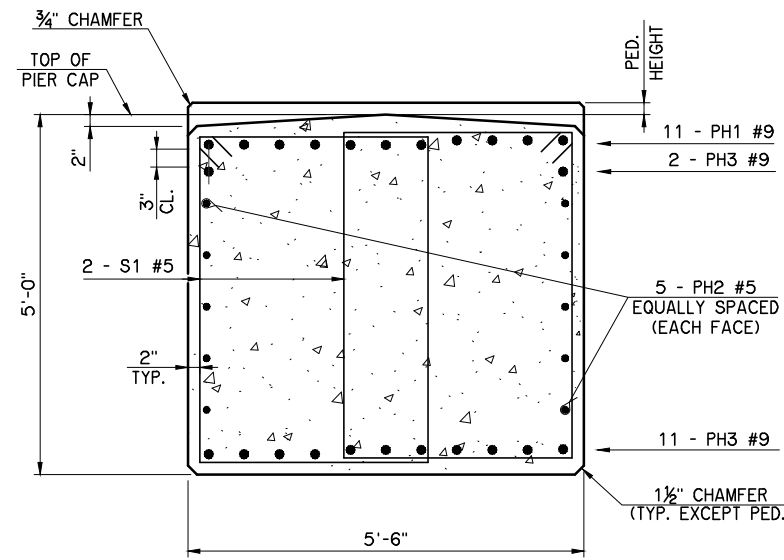
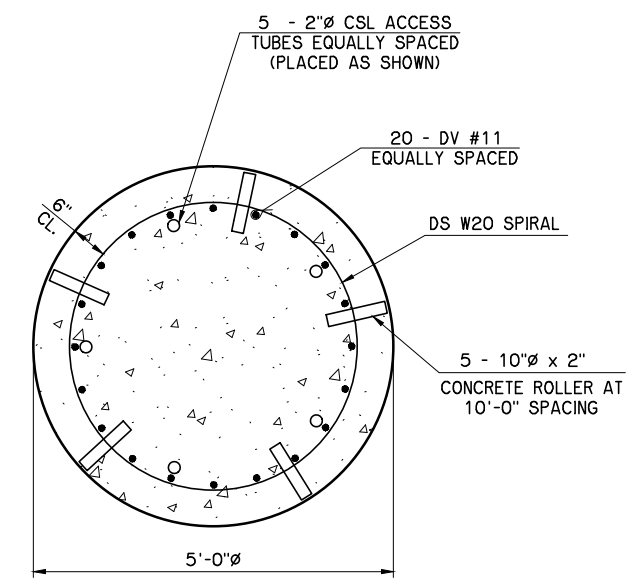


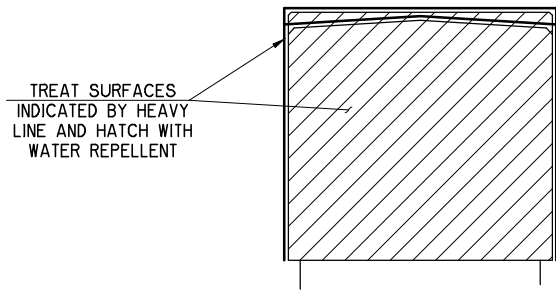
| REVISIONS | | |
|-----------|-------------|------|
| REV. NO. | DESCRIPTION | DATE |
| | | |



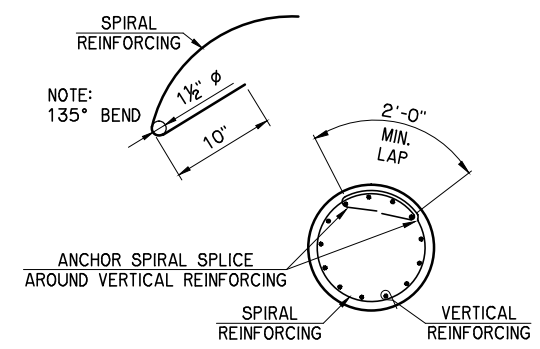
SECTION A-A



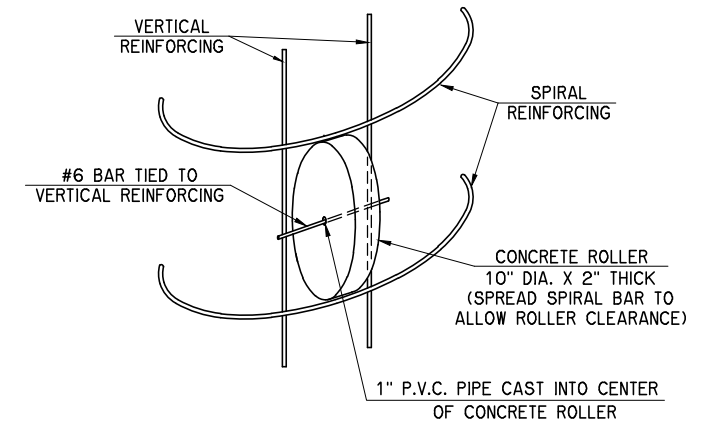
SECTION B-B



WATER REPELLENT TREATMENT DETAIL



SPIRAL REINFORCING SPLICE DETAIL



DRILLED SHAFT ROLLER DETAIL

NOTE:
CONCRETE USED IN THE CONCRETE ROLLER SHALL HAVE A MINIMUM 28 DAY COMPRESSION STRENGTH OF 4,000 PSI. SLAB BOLSTERS, HIGH CHAIRS, OR PLASTIC ROLLERS SHALL NOT BE SUBSTITUTED FOR THE CONCRETE ROLLERS.

| PIER QUANTITIES | | | | | |
|--------------------------------------|------|------------|------------|------------|--------|
| ITEM | UNIT | PIER NO. 1 | PIER NO. 2 | PIER NO. 3 | TOTAL |
| CLASS A CONCRETE | C.Y. | 40.7 | 40.7 | 40.7 | 122.1 |
| EPOXY COATED REINFORCING STEEL | LB. | 5,270 | 5,270 | 5,270 | 15,810 |
| WATER REPELLENT (VISUALLY INSPECTED) | S.Y. | 76 | 76 | 76 | 228 |
| DRILLED SHAFTS 60" DIAMETER | L.F. | 96 | 96 | 94 | 286 |
| CROSSHOLE SONIC LOGGING | EA. | | | | 2 |

| | | | | | |
|-------------------------------------|--|------------------------------|--|--------|-----|
| S.H. 44 OVER ELK CREEK | | KIOWA COUNTY | | Design | AFW |
| PIER DETAILS SHEET 2 OF 2 | | | | Detail | DRB |
| | | | | Check | AFW |
| WHITE ENGINEERING ASSOCIATES | | | | | |
| STATE OF OKLAHOMA | | DEPARTMENT OF TRANSPORTATION | | | |
| JOB PIECE NO. 28999(04) | | SHEET NO. 24 | | | |